

# Schuppenstromverdichtung Shingle stream compactor

Ersatzteilliste  
Spare part list  
Liste des pièces de rechange



**SSC 770**

Für künftige Verwendung aufbewahren!  
Keep for future use!  
A ranger en vue d'une réutilisation future!

<b>Art der Maschine:</b> <b>Type of machine:</b> <b>Type de machine:</b>	Schuppenstromverdichtung Shingle stream compactor	
<b>Ausführung:</b> <b>Model:</b> <b>Version:</b>	SSC 770	
<b>Art des Dokumentes:</b> <b>Typ of document:</b> <b>Nature du document:</b>	Ersatzteilliste Spare part list Liste des pièces de rechange	
<b>Hersteller:</b> <b>Manufacturer:</b> <b>Le fabricant:</b>	MBO Maschinenbau Oppenweiler Binder GmbH & Co. KG Postfach 1169 71567 Oppenweiler DEUTSCHLAND Tel.: +49 7191 46 0 Fax: +49 7191 46 34 <a href="http://www.mbo-folder.com">http://www.mbo-folder.com</a> <a href="mailto:info@mbo-folder.com">info@mbo-folder.com</a>	
<b>Ersatzteil - Bestellung:</b> <b>Spare parts order:</b> <b>Commande de pièces détachées:</b>	Service Ersatzteile/Spare parts service MBO Binder Spółka z o.o. ul. Brukowa 6/8 lok.47 91-341 Lodz POLEN / POLAND NIP 947-194-86-60 REG. 100432564 Tel. + 48 42 613 15 50 Fax + 48 42 613 15 66 e-mail: <a href="mailto:j.andrzejczak@mbopolska.pl">j.andrzejczak@mbopolska.pl</a>	
<b>Dateiname:</b> <b>File name:</b> <b>Nom de fichier:</b>	ETL_SSC 770_pl_en_pl_V1.0	
<b>Version:</b>	V1.0	<b>Hauptstückliste:</b> <b>Main parts list:</b> <b>Liste de pièces:</b>
<b>Stand:</b> <b>Date:</b> <b>Mise à jour:</b>	27.11.2012	<b>Komissions-Nr.:</b> <b>Commission-No.:</b> <b>N° de commission:</b>
<b>Sprache:</b> <b>Language:</b> <b>Langue:</b>	de en fr	<b>Techn. Redakteur:</b> Artur Krol <b>Technical editor:</b> <b>Rédacteur technique:</b>

**Änderungen vorbehalten!**  
**Alterations reserved!**  
**Sous réserve de modifications!**

## Kundendienstinformation

Halten Sie bei Ersatzteil-Bestellungen unbedingt die nachfolgenden Angaben bereit. Dies gewährleistet eine schnelle und fehlerfreie Auftragsbearbeitung.

<ul style="list-style-type: none"><li>• Kommissionsnummer, Fabrikationsnummer</li><li>• Maschinentyp</li></ul>	Sie finden diese Angaben am Typenschild Ihrer Maschine.
<ul style="list-style-type: none"><li>• Teilebezeichnung</li><li>• Teilenummer</li><li>• Dokumenten-Nummer</li></ul>	Sie entnehmen diese Informationen der Ersatzteilliste Ihrer Maschine.

Die ausführlichen Informationen dazu finden Sie direkt zu Beginn der Ersatzteilliste.

## Service information

In case of spare part orders, it is necessary to keep the following information ready.

This guarantees a quick and error-free order processing.

<ul style="list-style-type: none"><li>• Commission number, Fabrication number</li><li>• Machine type</li></ul>	You will find these information on the type plate of your machine.
<ul style="list-style-type: none"><li>• Part designation</li><li>• Part number</li><li>• Document number</li></ul>	You will find these information in the spare part list of your machine.

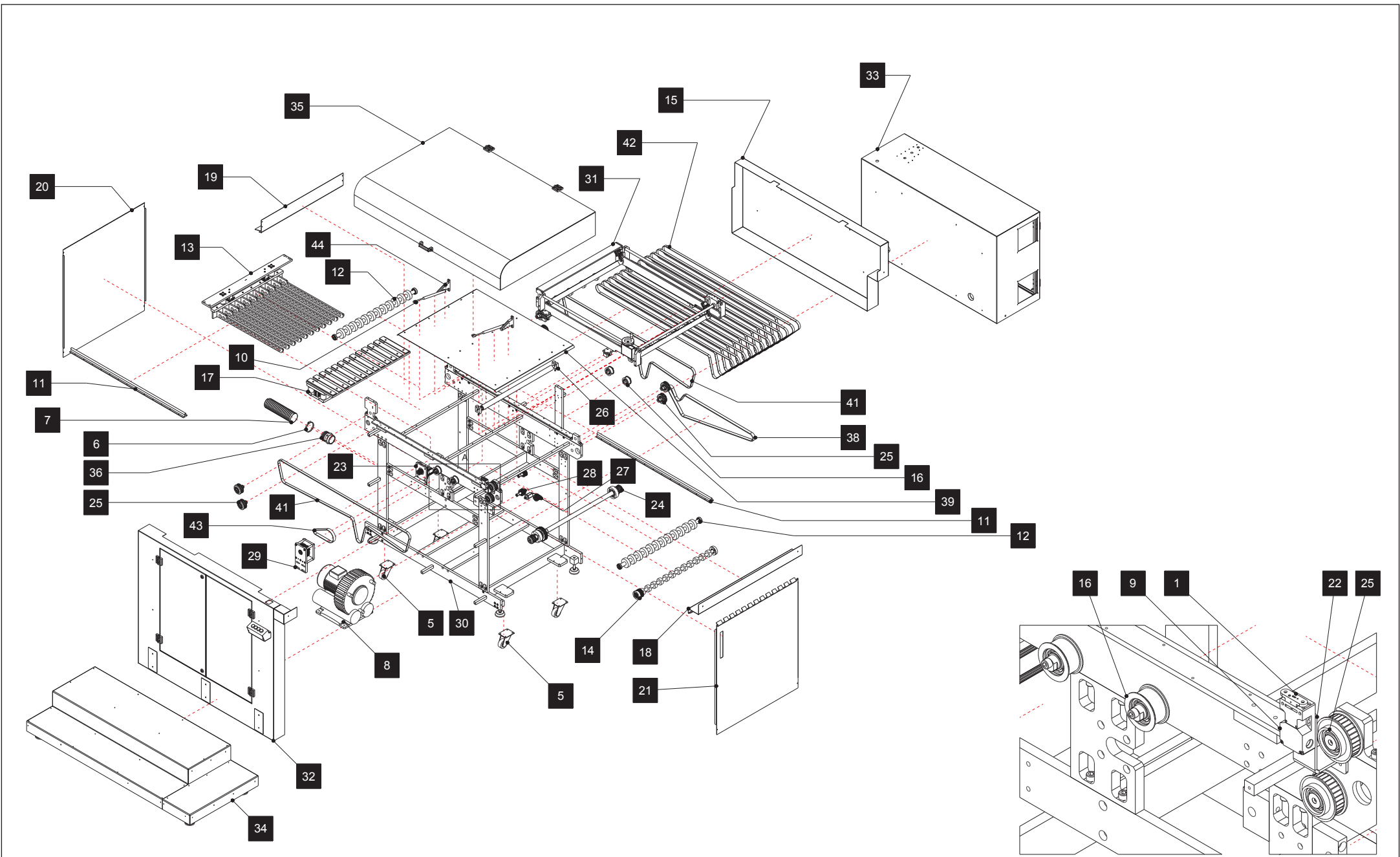
You will find the detailed information at the beginning of this spare part list.

## Information service après-vente

En cas de commandes concernant des pièces de rechange, veuillez tenir les indications suivantes à votre disposition. Ainsi, un traitement rapide et sans fautes de la commande peut être garanti.


<ul style="list-style-type: none"><li>• Numéro de commission, Numéro de fabrication</li><li>• Type de la machine</li></ul>	Vous trouvez cetttes indications à la plaque signalétique de votre machine.
<ul style="list-style-type: none"><li>• Désignation d'article</li><li>• Numéro d'article</li><li>• Numéro de document</li></ul>	Veuillez prendre cetttes informations de la liste de pièces de rechange de votre machine.

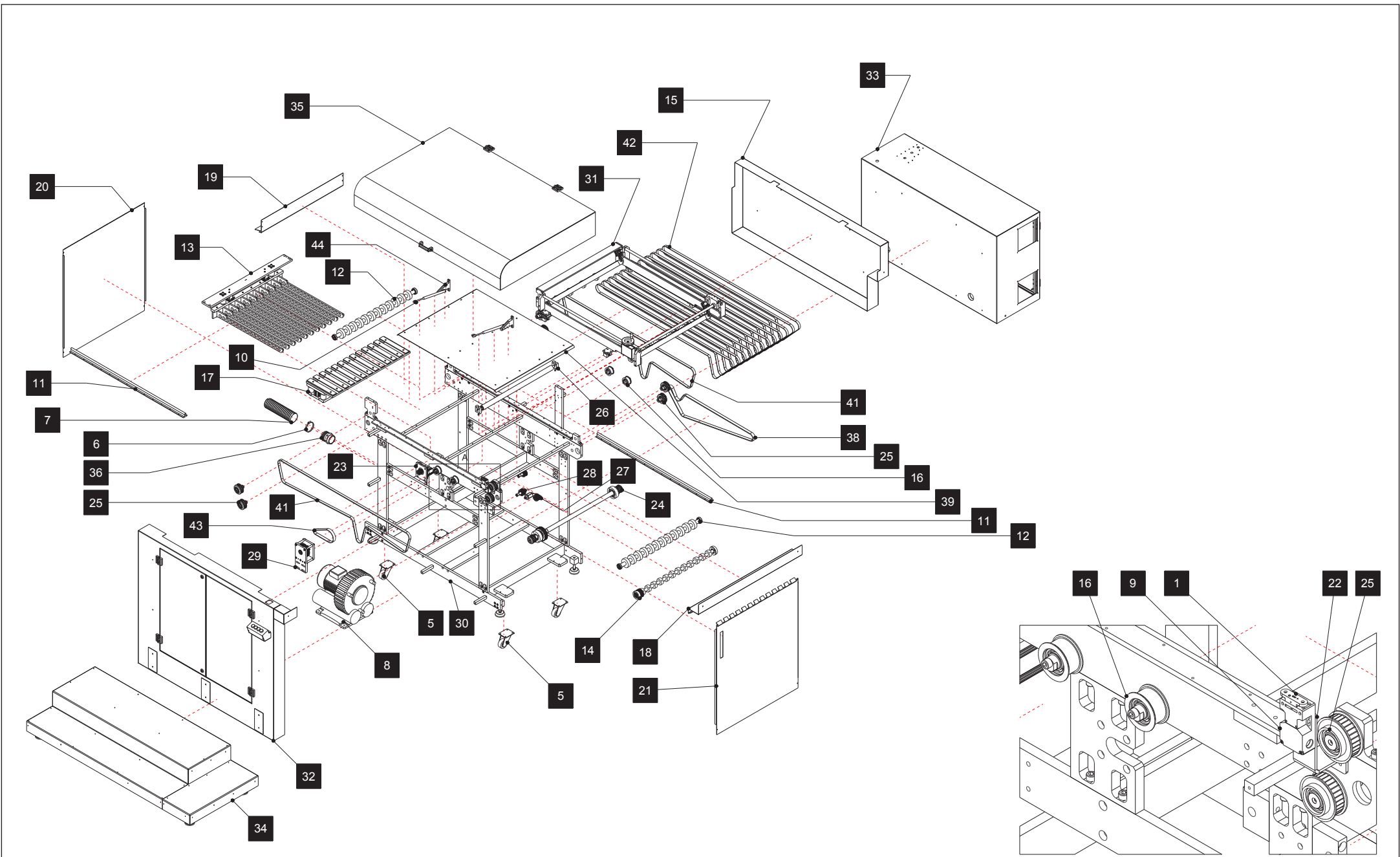
Vous trouvez les informations détaillées au début de votre fichier de pièces de rechange.



	TST-1-0011	ET SSC	1	SSC770 P-L	1 - 1
		Version:		SSC770 R-L	
			SSC770 R-L		


POS.	NAZWA	DESIGNATION	BEZEICHNUNG	PART NUMBER	PAG
1	Aktywator	Actuator	Aktivator	Actuator AZ	
2	Podkładka DIN 9021 - 5,3	Washer DIN 9021 - 5,3	Unterlage DIN 9021 - 5,3	DIN 9021 - 5,3	
3	Śruba DIN 912 M5x10	Screw DIN 912 - M5x10	Schraube DIN 912 - M5x10	DIN 912 - M5 x 10	
4	Czujnik	Sensor	Sensor	IM12-02BPS-ZT1	
5	Zestaw skretny LH-SPO 75K	Torsion set LH-SPO 75K	Drehschemelsatz LH-SPO 75K	LH-SPO 75K	
6	Opaska zaciskowa 70-90 mm	Clamp 70-90 mm	Klemme 70-90mm	Opaska zaciskowa 70-90	
7	Rura fi80P7PU	Pipe fi80 P7PU	Röhre fi80 P7PU	Rura 80 P7PU	
8	Pompa próżniowa SV 7.330 Becker	Vacuum pump SV 7.330 Becker	Die Vakuumpumpe SV 7.330 Becker	SV 7.330_1-01VS	
9	Wyłącznik bezpieczeństwa	Safety switch	Sicherheitsschalter	Schmersal AZ 16	
10	Sprężyna gazowa	Gas spring	Gasfeder	Sprężyna gazowa	
11	Prowadnica TSNW16 L=1320mm AL=60mm	Guideway TSNW16 L=1320mm AL=60mm	Die Führungsschiene TSNW16 L=1320mm AL=60mm	TSNW16-1320	
12	Zespół osi	Pivot assembly	Achsa Gruppe	TST-2-0019	
13	Stoper	Stopping mechanism		TST-2-0021	
14	Oś napędowa	Drive axle	Antriebsachse	TST-2-0025	
15	Oslona	Cover	Die Haube	TST-2-0033	
16	Napinacz	Tensioner	Spanner	TST-2-0078	
17	Stoper dolny	Bottom stopping machinery	Unterbehaltenmechanismus	TST-2-0167	
18	Oslona	Cover	Die Haube	TST-4-0225	
19	Oslona	Cover	Die Haube	TST-4-0226	
20	Oslona	Cover	Die Haube	TST-4-0227	
21	Oslona	Cover	Die Haube	TST-4-0228	
22	Uchwyt			TST-4-0257	
23	Zespół silnika	Motor assembly	Motorsatz	TST2298	
24	Oś napędowa - kpl.	Drive axle	Antriebachse	TST2300	
25	koło przewijające	Rewinding wheel	Spulenrad	TST2301	
26	Napinacz	Tensor	Spanner	TST2314	
27	Napinacz	Tensor	Spanner	TST2319	
28	Zespół koła przewijającego	Assembly of the rewinding wheel	Spulenradsatz	TST2334	
29	Przekładnia pośrednia	Indirect gear	Zwischenübersetzung	XBL2061	
30	Rama SSV	Frame SSV	Gestell SSV	XPL-2-0001	
31	Rama ruchoma	Moving frame	Beweglichenrahmen	XPL-2-0002	
32	Oslona	Cover	Die Haube	XPL-2-0004	
33	Szafa elektryczna	Electric cabinet	Electrische schrank	XPL-2-0006	
34	Podest kompletny	Complete platform	Komplette Plattform	XPL-2-0045	
35	Oslona	Cover	Die Haube	XPL-2-0060	
36	Przyłącze fi80 -2 1/2"	Tie-in fi80 - 2 1/2"	Das Rohransatzstück fi80 - 2 1/2"	XPL-3-0047	
37	Wspornik czujnika	Sensor bracket	Die Sensorstütze	XPL-4-0027	
38	Pasek HTD25 D-5M L=2250mm	Timing Belt HTD25 D-5m L=2250mm	Zahnriemen HTD25 D-5M L=2250mm	XPL-5-0002	

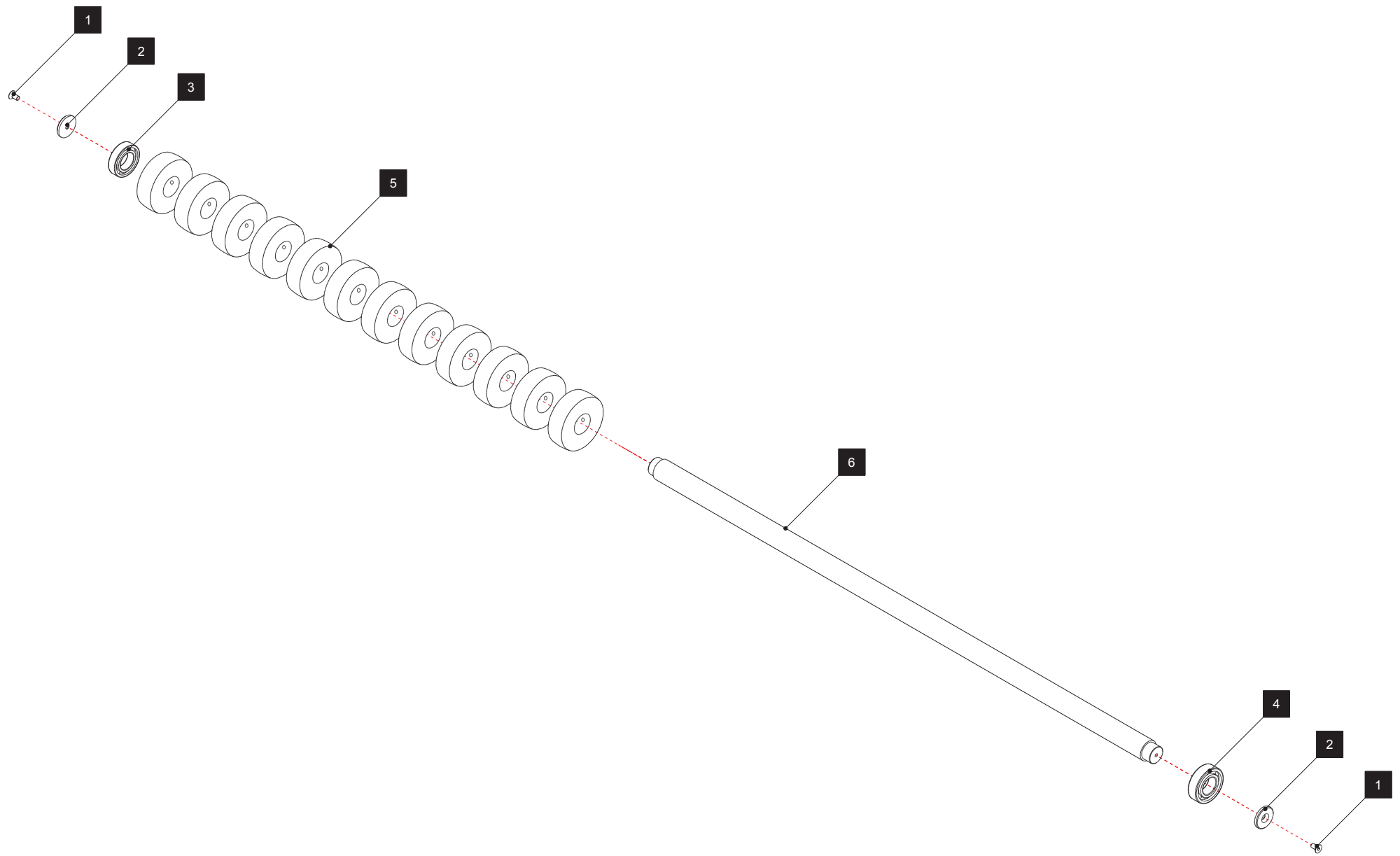
	TST-1-0011	ET SSC	1	SSC770 P-L	1 - 2
		Version:		SSC770 R-L	
				SSC770 R-L	




	TST-1-0011	ET SSC	1	SSC770 P-L	1 - 1
		Version:		SSC770 R-L	
			SSC770 R-L		

POS.	NAZWA	DESIGNATION	BEZEICHNUNG	PART NUMBER	PAG
39	Blacha WL5 g=2mm	Sheet metal WL5 g=2mm	Blech WL5 g=2mm	tst4215	
40	Pasek 5M/25 HTD L=700mm	Timing Belt 5M/25 HTD L=700mm	Zahnriemen 5M/25 HTD L=700mm	tst5069	
41	Pasak 8M20HTD L=3616mm	Timing Belts 8M20HTD L=3616mm	Zahnriemen 8M20HTD L=3616mm	tst5071	
42	Pasek MAM-04H B=20 L=3260mm	Timing Belt MAM-04H B=20 L=3260mm	Zahnriemen MAM-04H B=20 L=3260mm	tst5072	
43	Pasek 5M25HTD L=565mm	Timing Belt 5M25HTD L=565mm	Zahnriemen 5M25HTD L=565mm	xbl5017	
44	Uchwyt	Handle	Der Griff	xis3585	


	TST-1-0011	ET SSC	1	SSC770 P-L	1 - 3
		Version:		SSC770 R-L	

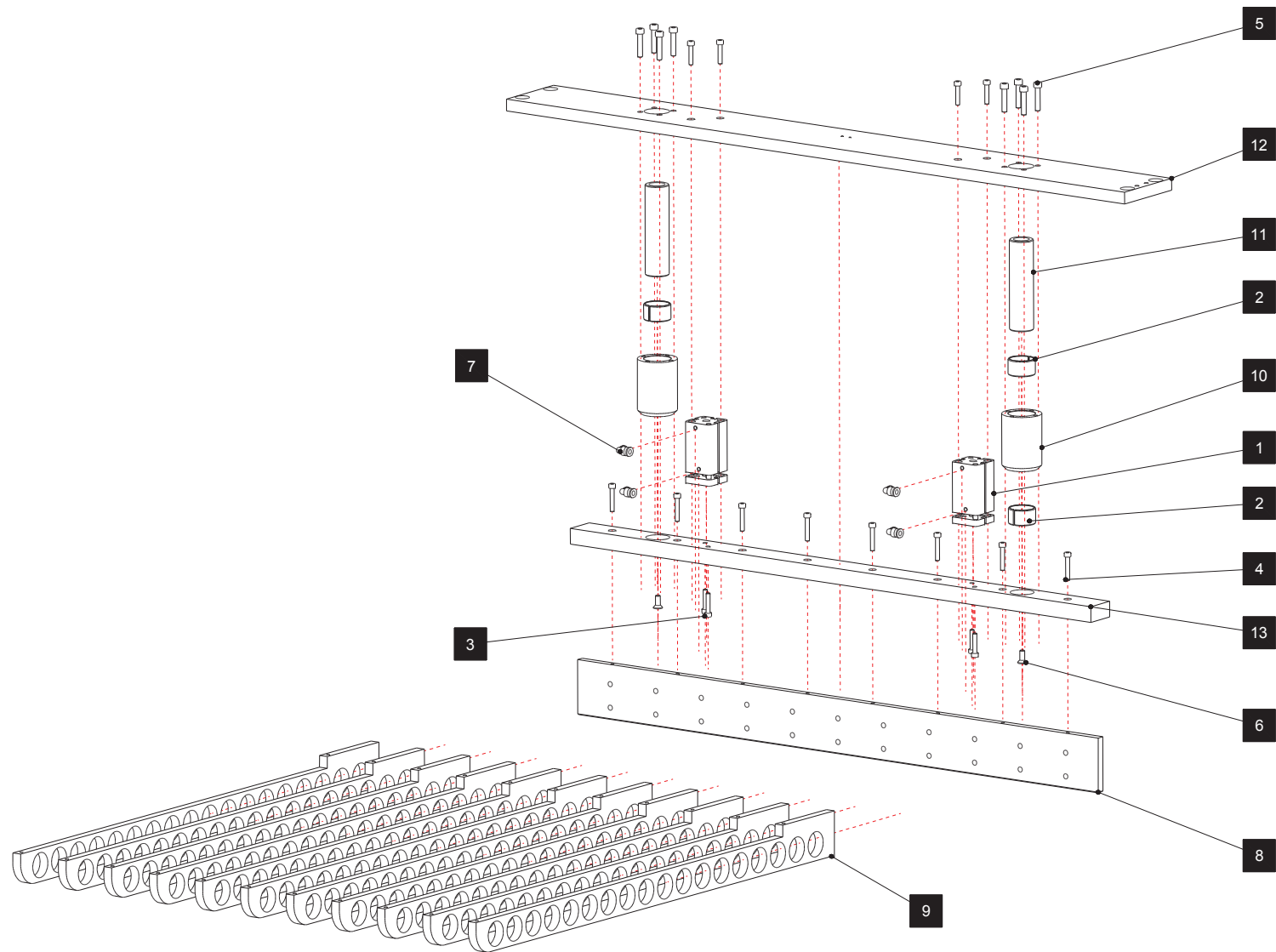



	TST-2-0019	ET SSC	1.12	Zespół osi	1.12 - 1
		Version:		Achsa Gruppe Pivot assembly	




POS.	NAZWA	DESIGNATION	BEZEICHNUNG	PART NUMBER	PAG
1	Śruba DIN 7991 - M6x12	Screw DIN 7991 - M6x12	Schraube DIN 7991 - M6x12	DIN 7991 - M6x12	
2	Podkładka GN184-32	Wash GN184-32	Unterlage GN184-32	GN184-32	
3	Łóżysko kulkowe SKF 6005 - 2Z	Ball bearing SKF 6005 - 2Z	Kugellager SKF 6005 - 2Z	SKF (D) - SKF 6005-2Z	
4	Łóżysko kulkowe SKF 6205 - 2Z	Ball bearing SKF 6205 - 2Z	Kugellager SKF 6205 - 2Z	SKF (D) - SKF 6205-2Z	
5	Rolka baryłkowa	Barrel roller	Fassroller	TST3932	
6	Oś	Pivot	Achse	TST7335	

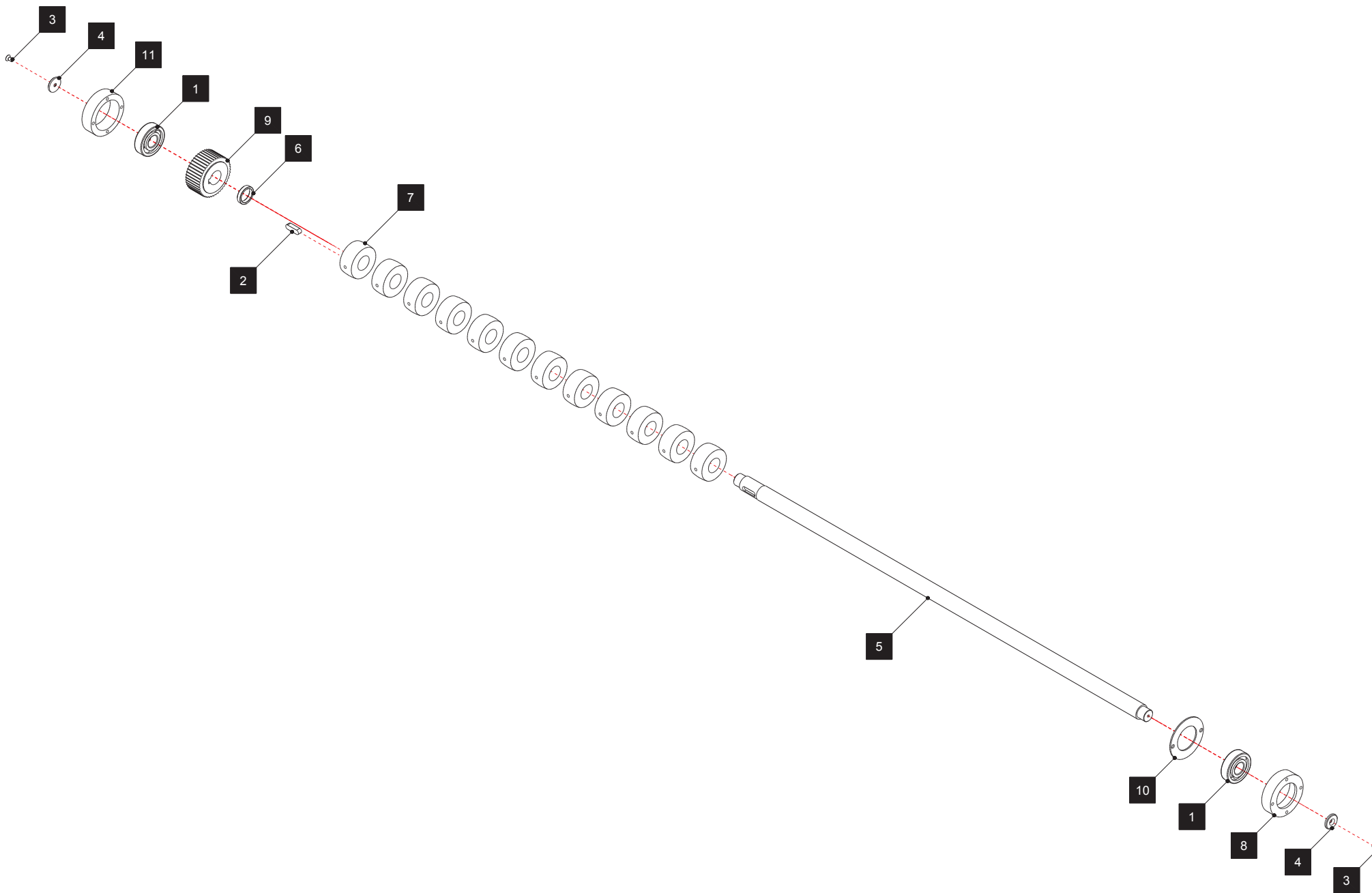
	TST-2-0019	ET SSC	1.12	Zespół osi	1.12 - 2
		Version:		Achsa Gruppe Pivot assembly	




	TST-2-0021	ET SSC	1.12	Stoper	1.12 - 1
	Version:			Stopping mechanism	


POS.	NAZWA	DESIGNATION	BEZEICHNUNG	PART NUMBER	PAG
1	Siłownik ADNGF 25x25 PA	Pneumatic actuator ADNGF 25x25 PA	Pneumatikzylinder ADNGF 25x25 PA	537126_ADNGF_25_25_P_A4 _0	
2	Tulejka 30x34x20	Sleeve 30x34x20	Buchse 30x34x20	624 030 20	
3	Śruba DIN 912 - M5x25	Screw DIN 912 - M5x25	Schraube DIN 912 - M5x25	DIN 912 - M5 x 25	
4	Śruba DIN 912 - M5x30	Screw DIN 912 - M5x30	Schraube DIN 912 - M5x30	DIN 912 - M5 x 30	
5	Śruba DIN 912 - M6x30	Screw DIN 912 - M6x30	Schraube DIN 912 - M6x30	DIN 912 - M6 x 30	
6	Śruba ISO 10642 - M6x16	Screw ISO 10642 - M6x16	Schraube ISO 10642 - M6x16	ISO 10642 - M6 x 16	
7	Złącze wtykowe L	Swivel Elbow Adaptors	Drehbare Winkel-Einschraubverschraubungen	QSML-M5-6	
8	Płyta	Plate	Platte	TST-3-0037	
9	Docisk	Holdfast	Druck	TST-3-0359	
10	Tuleja	Bush	Busch	TST-3-0418	
11	Prowadnica	Track	Zaun	TST-3-0419	
12	Trawersa	Crossbar	Traverse	TST7403	
13	Listwa	Lath	Latte	TST7404	

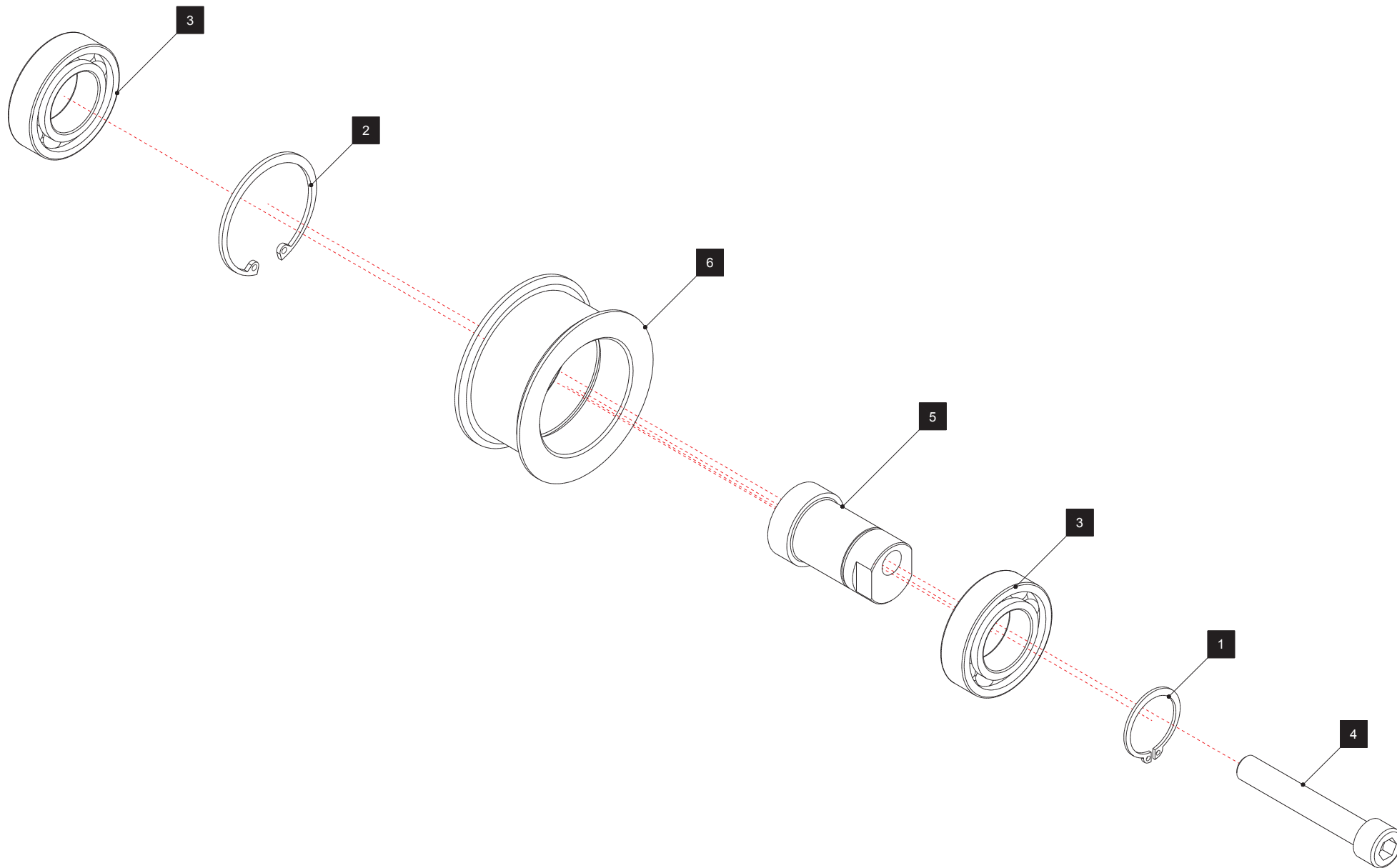
	TST-2-0021	ET SSC	1.12	Stoper	1.12 - 2
		Version:		Stopping mechanism	




	TST-2-0025	ET SSC	1.14	<b>Oś napędowa</b>	1.14 - 1
		Version:		Antriebsachse Drive axle	


POS.	NAZWA	DESIGNATION	BEZEICHNUNG	PART NUMBER	PAG
1	Łożysko DIN 625 T1 - 6304 - 20x52x15	Bearing DIN625 T1 - 6304 - 20x52x15	Kugellager DIN 625 T1 - 6304 -20x52x15	DIN 625 T1 - 6304 - 20 x 52 x 15	
2	Wpust A 8x7x28	Joggle A 8x7x28	Längsnase A 8x7x28	DIN 6885 - A 8 x 7 x 28	
3	Śruba M5x10	Screw M5x10	Schrauben M5x10	DIN 7991 - M5x10	
4	Podkładka	Washer	Unterlage	GN 184-25	
5	Oś	Axle	Achse	TST-3-0040	
6	Tulejka	Bush	Buchse	TST-3-0041	
7	Rolka baryłkowa	Barell Roll	Fässchenrolle	TST7451	
8	Oprawa II	Frame II	Fassung II	TST7452	
9	Koło 5M HTD/25 z=44	Pulleys 5M HTD/25 z=44	Zahnriemenräder 5M HTD/25 z=44	XPL-6-0002	
10	Pokrywa	Lid	Haube	tst3921	
11	Oprawa I	Frame I	Fassung I	tst7481	

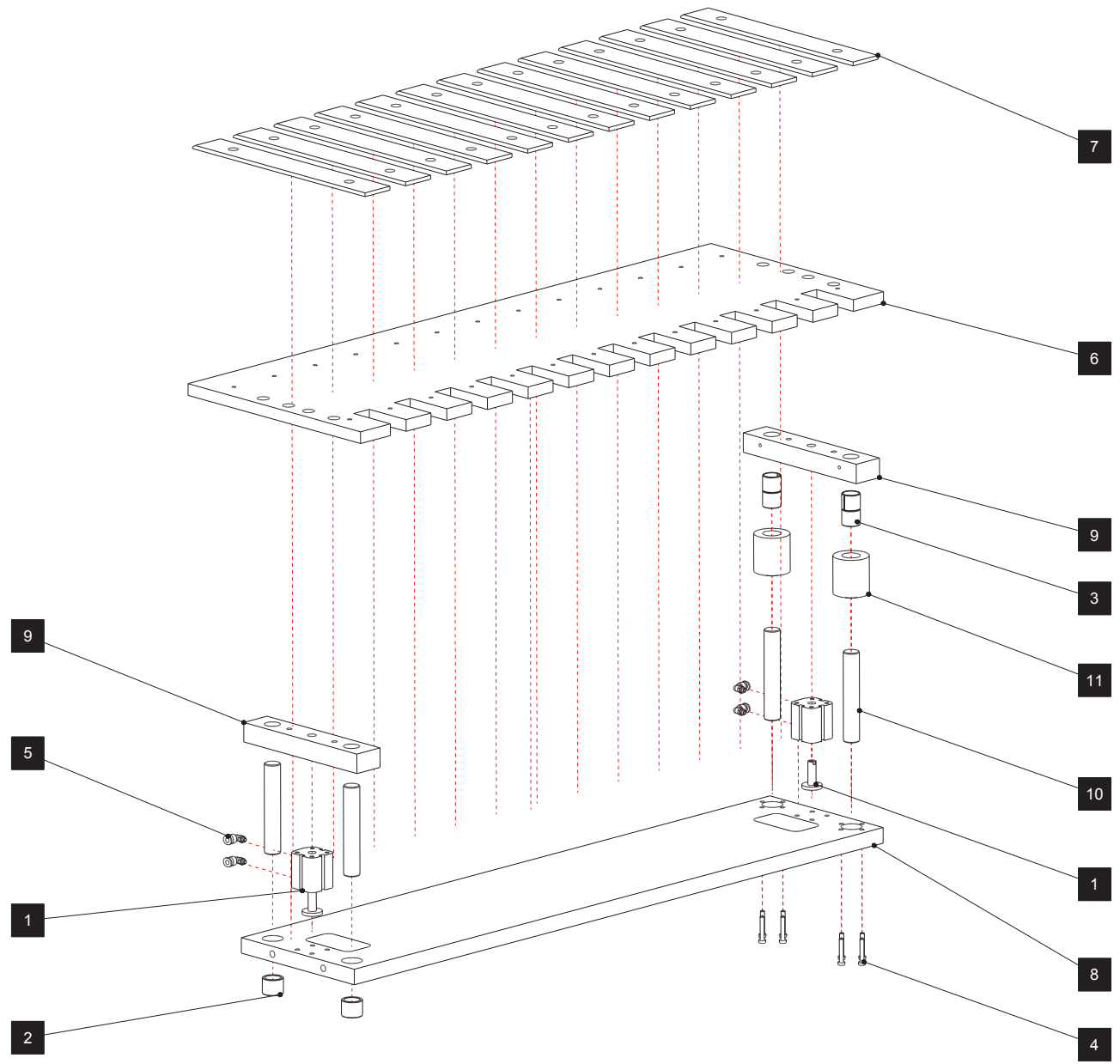
	TST-2-0025	ET SSC	<b>1.14</b>	<b>Oś napędowa</b> Antriebsachse Drive axle	<b>1.14 - 2</b>
		Version:			




	TST-2-0078	ET SSC	1.16	Napinacz	1.16 - 1
	Version:			Spanner Tensioner	

POS.	NAZWA	DESIGNATION	BEZEICHNUNG	PART NUMBER	PAG
1	Pierścień ustalający DIN 471 - 25x1,2	Die Sicherungsringe DIN 471 - 25x1,2	Retaining ring DIN 471 - 25x1,2	DIN 471 - 25x1,2	
2	Pierścień ustalający DIN 471 - 47x1,5	Die Sicherungsringe DIN 472 - 47x1,5	Retaining ring DIN 472 - 47x1,75	DIN 472 - 47x1,75	
3	Łożysko kulkowe DIN 625 SKF 6005-2Z	Ball bearing DIN 625 SKF 6005-2Z	Kugellager DIN 625 SKF 6005-2Z	DIN 625 SKF - SKF 6005-2Z	
4	Śruba DIN 912 - M10x65	Screw DIN 912 - M10x65	Schraube DIN912 - M10x65	DIN 912 - M10 x 65	
5	Oś	Axle	Achse	TST-3-0149	
6	Rolka napinacza	Tensioner roll	Spannerroll	TST-3-0150	


	TST-2-0078	ET SSC	1.16	Napinacz	1.16 - 2
		Version:		Spanner Tensioner	

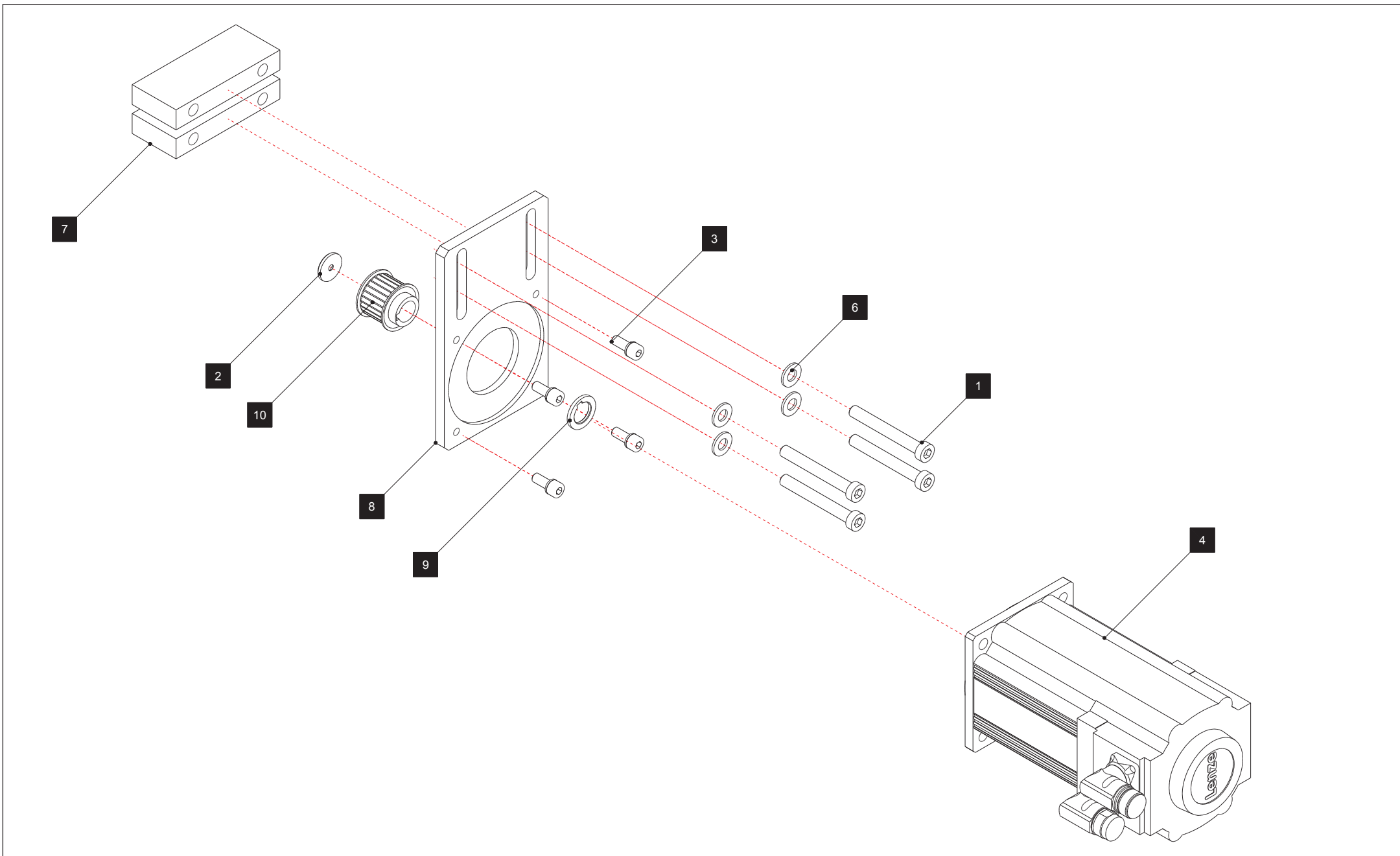



	TST-2-0167	ET SSC	1.17	<b>Stoper dolny</b>	1.17 - 1
	Version:			Unterhaltenmechanismus Bottom stopping machinery	




POS.	NAZWA	DESIGNATION	BEZEICHNUNG	PART NUMBER	PAG
1	Siłownik ADVU 25x5 PA	Pneumatic actuator ADVU-25-5-P-A	Pneumatikzylinder ADVU-25-5-P-A	156003 ADVU-25-5-P-A	
2	Tulejka 20/26/20	Sleeve 20/26/20	Buchse 20/26/20	623 354 00	
3	Tulejka 20/23/20	Sleeve 20/23/20	Buchse 20/23/20	624 020 20	
4	Śruba	Screw	Schraube	DIN 7984 - M5 x 30	
5	Złącze wtykowe L	Plug "L"	Stecker "L"	QSML-M5-6	
6	Płyta	Plate	Platte	TST-3-0035	
7	Płyta	Plate	Platte	TST-3-0036	
8	Trawersa	Crossbar	Traverse	TST-3-0361	
9	Kostka	Cube	Würfel	TST7349	
10	Prowadnica	Guidewire	Führungsstück	TST7350	
11	Tulejka prowadząca	Guiding sleeve	Führenbuchse	XPL-3-0151	

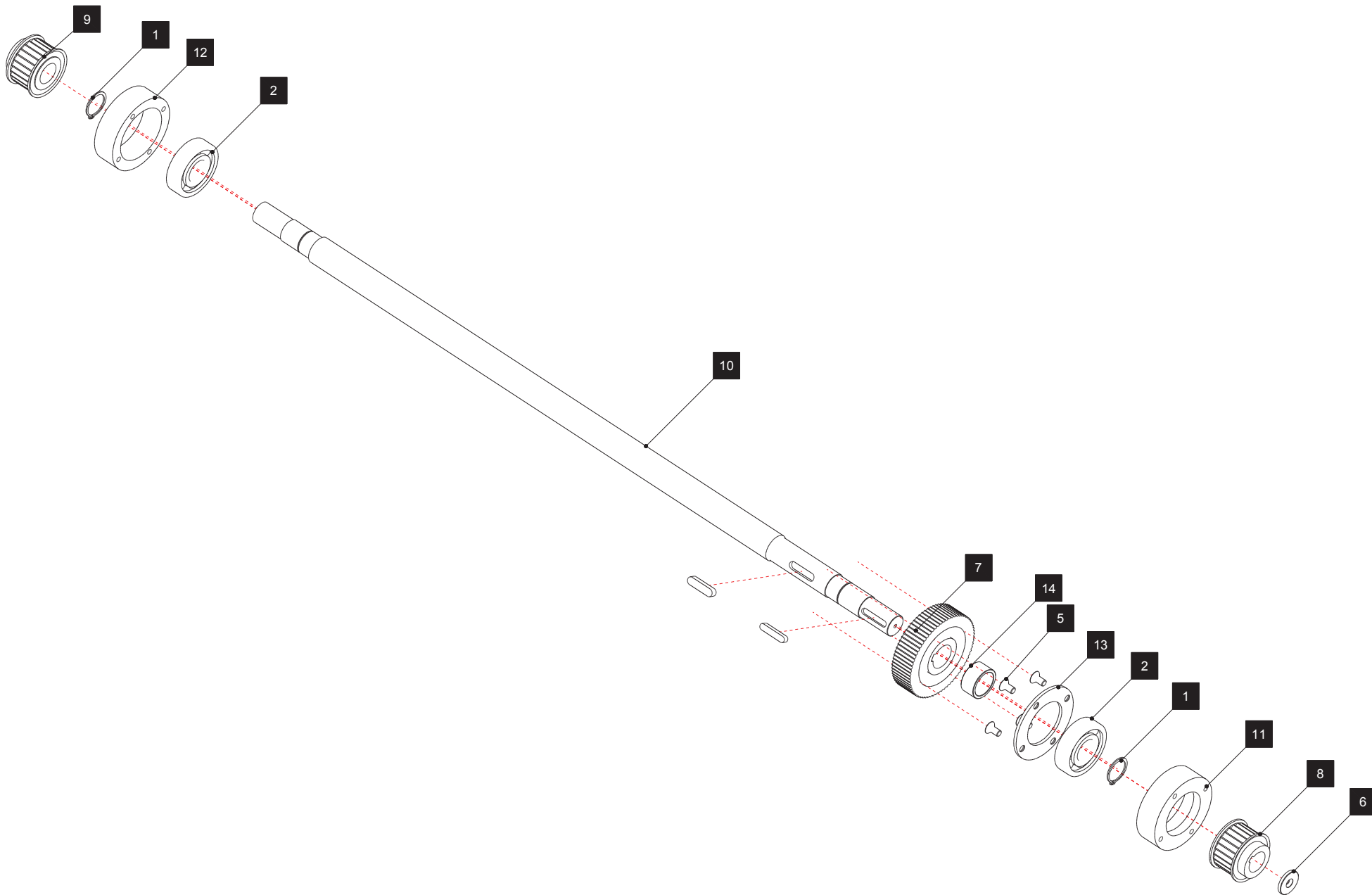
	TST-2-0167	ET SSC	<b>1.17</b>	<b>Stoper dolny</b> Unterbehaltenmechanismus Bottom stopping machinery	<b>1.17 - 2</b>
		<b>Version:</b>			




	TST2298	ET SSC	1.23	Zespół silnika	1.23 - 1
		Version:		Motorsatz	
				Motor assembly	


POS.	NAZWA	DESIGNATION	BEZEICHNUNG	PART NUMBER	PAG
1	Śruba	Screw	Schraube	DIN 6912 - M10 x 80	
2	Podkładka	Washer	Unterlage	GN 184-25	
3	Śruba	Screw	Schraube	ISO 4762 - M8 x 20	
4	Silnik elektryczny MCS 12H15	Electric motor MCS 12H15	Elektromotor MCS 12H15	MCS 12H15	
5	Podkładka	Washer	Unterlage	PN-77/M-82008 - 8,2	
6	Podkładka	Washer	Unterlage	PN-78/M-82005 - 10,5	
7	Dystans	Distance	Distanze	TST7371	
8	Płyta silnika	Engine platte	Motorplatte	XBL3192	
9	Dystans	Distance	Distanz	XBL3307	
10	Kółko M5HTD25 Z24	Pulley M5HTD25	Zahnriemenräder M5HTD25	XFL6043	

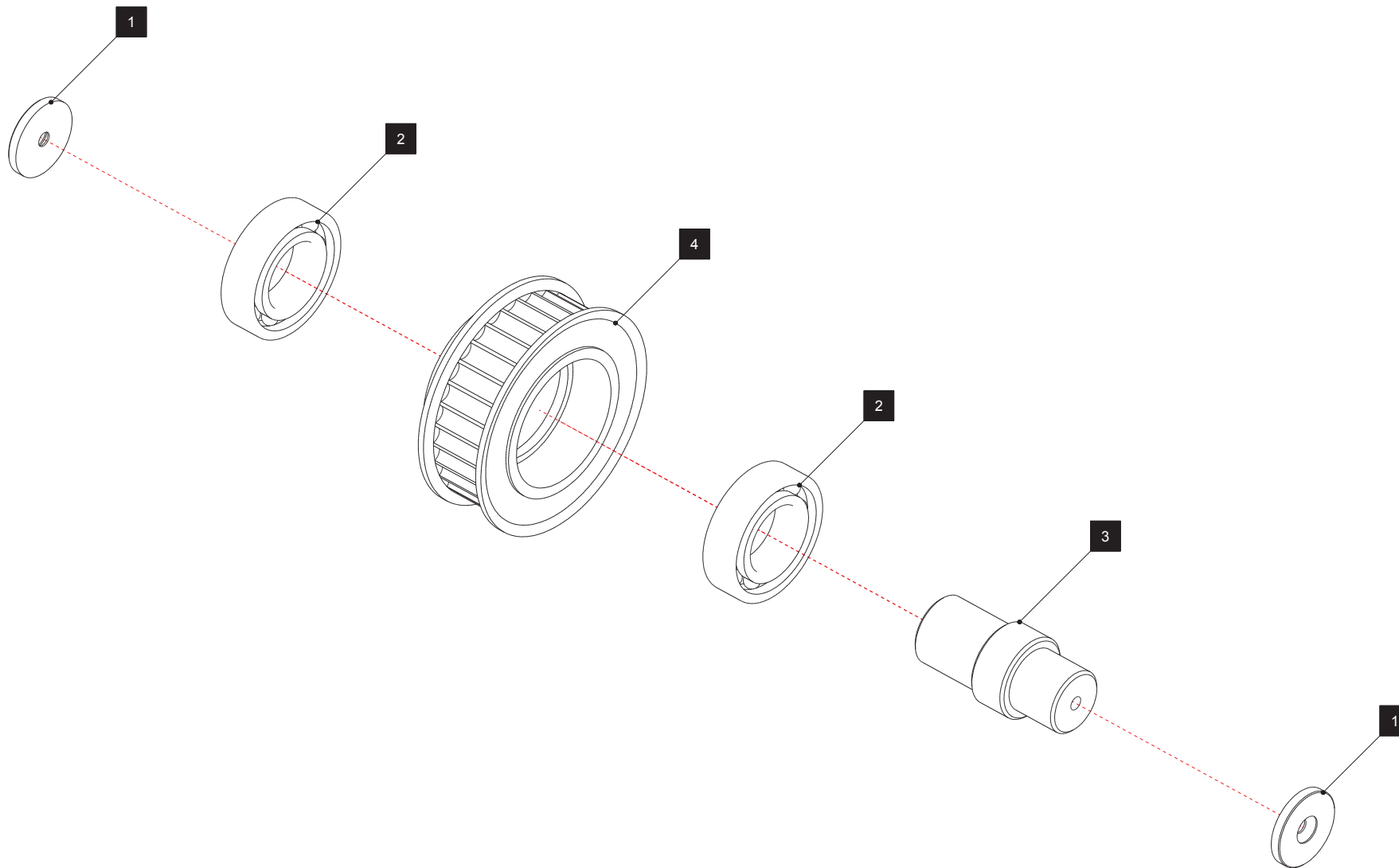
	TST2298	ET SSC	1.23	Zespół silnika	1.23 - 2
		Version:		Motorsatz Motor assembly	




	TST2300	ET SSC	1.24	<b>Oś napędowa - kpl.</b>	1.24 - 1
	Version:			Antriebachse Drive axle	


POS.	NAZWA	DESIGNATION	BEZEICHNUNG	PART NUMBER	PAG
1	Pierścień zabezpieczający DIN 471 30x1,5	Retaining Ring DIN 471 30x1,5	Sicherungsringe DIN 471 30x1,5	DIN 471 - 30x1,5	
2	Łożysko kulkowe DIN 625 T1 6306 30x72x19	Ballbearing DIN 625 T1 6306 30x72x19	Kugellager DIN 625 T1 6306 30x72x19	DIN 625 T1 - 6306 - 30 x 72 x 19	
3	Wpust DIN 6885 A 10x8x40	Parallel Key DIN 6885 - A 10x8x40	Passfedern DIN 6885 - A 10x8x40	DIN 6885 - A 10 x 8 x 40	
4	Wpust DIN 6885 A 8x7x40	Parallel Key DIN 6885 - A 8x7x40	Passfedern DIN 6885 - A 8x7x40	DIN 6885 - A 8 x 7 x 40	
5	Śruba z łbem stożkowym DIN 7991 - M8x16	Screw with cone head DIN 7991 - M8x16	Schraube mit Kegel Kopf DIN7991 - M8x16	DIN 7991 - M8x16	
6	Podkładka dociskowa	Press Washer	Drückenunterlage	GN 184-32	
7	Koło 5M25HTD z72	Pulley 5M25HTD z72	Zahnriemenräder 5M25HTD z72	TST6085	
8	Koło 8M30HTD Z24	Pulley 8M30HTD z24	Zahnriemenräder 8M30HTD z24	TST6086	
9	Koło 8M30HTD Z24	Pulley 8M30HTD Z24	Zahnriemenräder 8M30HTD Z24	TST6087	
10	Walek	Shaft	Welle	TST7372	
11	Oprawa II	Frame II	Rahmen II	TST7376	
12	Oprawa II	Frame II	Rahmen II	TST7377	
13	Pokrywka	Cover	Decke	TST7378	
14	Tulejka dyst.	Distance sleeve	Distanzbuchse	TST7398	

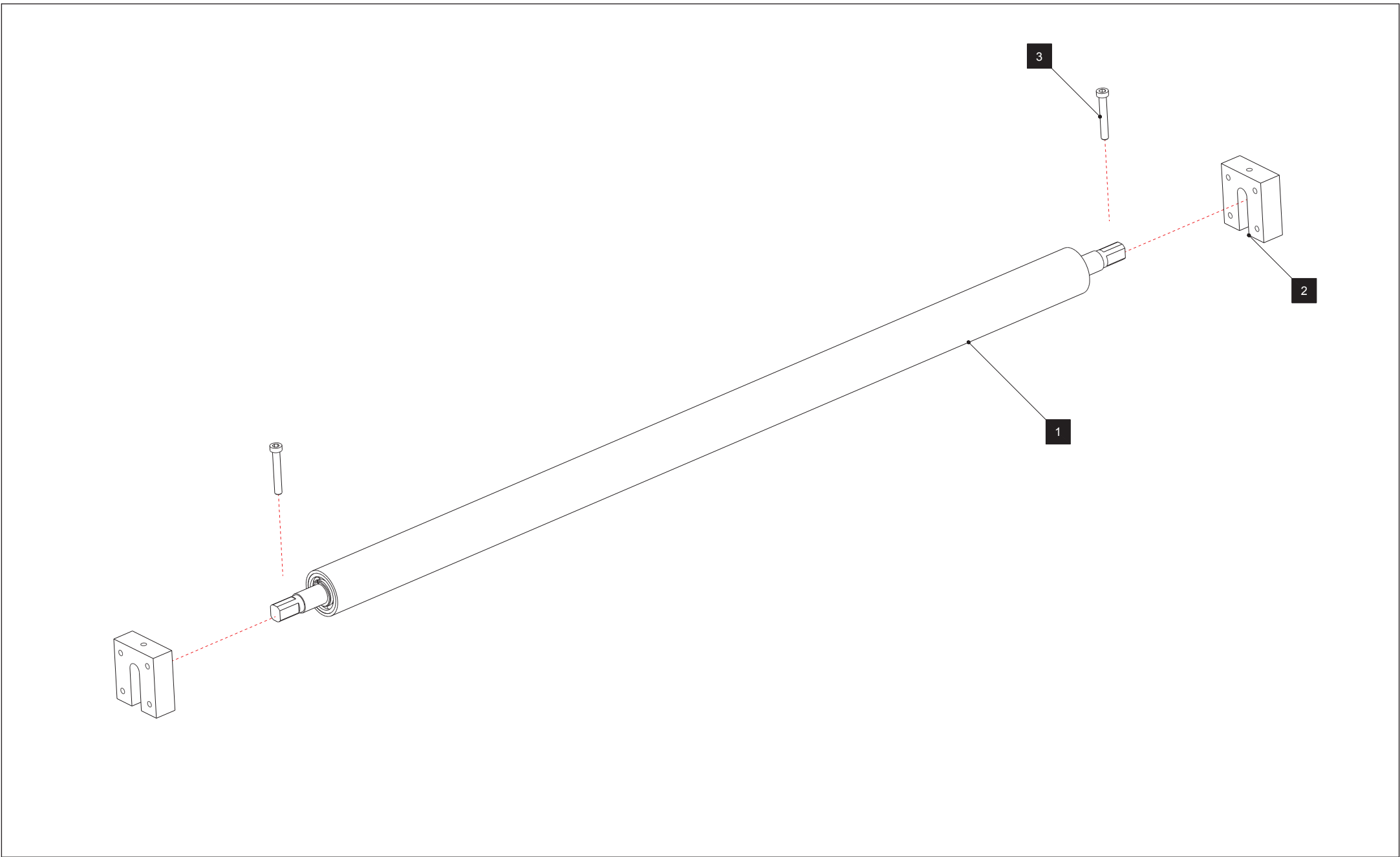
	TST2300	ET SSC	1.24	Oś napędowa - kpl.	1.24 - 2
		Version:		Antriebachse Drive axle	




	TST2301	ET SSC	1.25	koło przewijające	1.25 - 1
	Version:			Spulenrad	
				Rewinding wheel	

POS.	NAZWA	DESIGNATION	BEZEICHNUNG	PART NUMBER	PAG
1	Podkładka GN 184-28	Washer GN 184-28	Unterlage	GN 184-28	
2	Łożysko kulkowe PN-85/M-86100 - 6005 - 25 x 47 x 12	Ball bearing PN-85/M-86100 - 6005 - 25 x 47 x 12	Kugellager PN-85/M-86100 - 6005 - 25 x 47 x 12	PN-85/M-86100 - 6005 - 25 x 47 x 12	
3	Walek	Shaft	Welle	TST7379	
4	Koło 8M20HTD z30	Pulley 8M20HTD z30	Zahnriemenräder 8M20HTD z30	XBL6032	


	TST2301	ET SSC	1.25	koło przewijające	1.25 - 2
		Version:		Spulenrad Rewinding wheel	

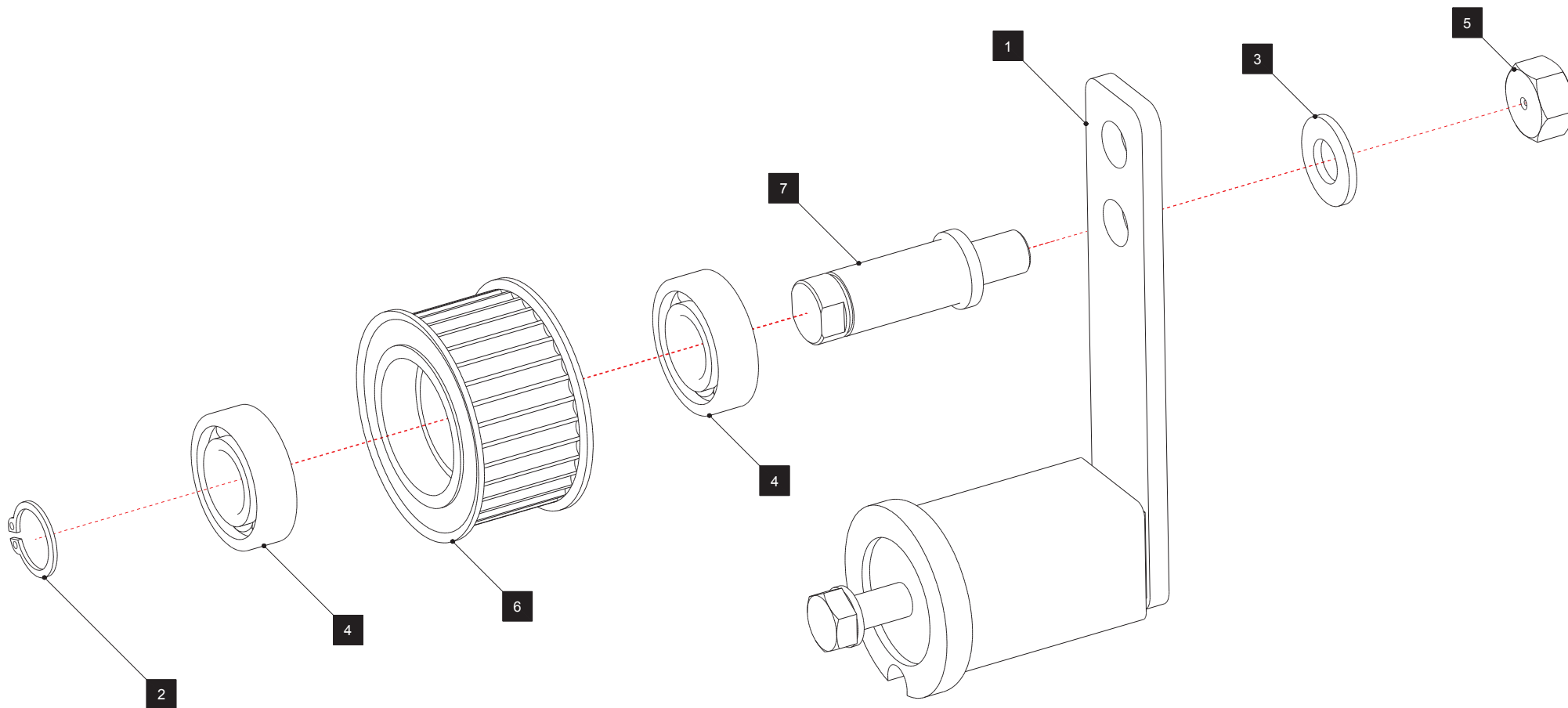


	TST2314	ET SSC	1.26	Napinacz	1.26 - 1
	Version:			Spanner Tensor	



POS.	NAZWA	DESIGNATION	BEZEICHNUNG	PART NUMBER	PAG
1	Rolka napinająca	Tensioner roll	Spannerroll	TST2313	
2	Wspornik	Bracket	Stütze	TST7450	
3	Śruba M6x40	Screw M6x40	Schraube M6x40	DIN 6912 - M6 x 40	

	TST2314	ET SSC	1.26	Napinacz	1.26 - 2
		Version:		Spanner Tensor	



TST2319

ET SSC

Version:

1.27


Napinacz

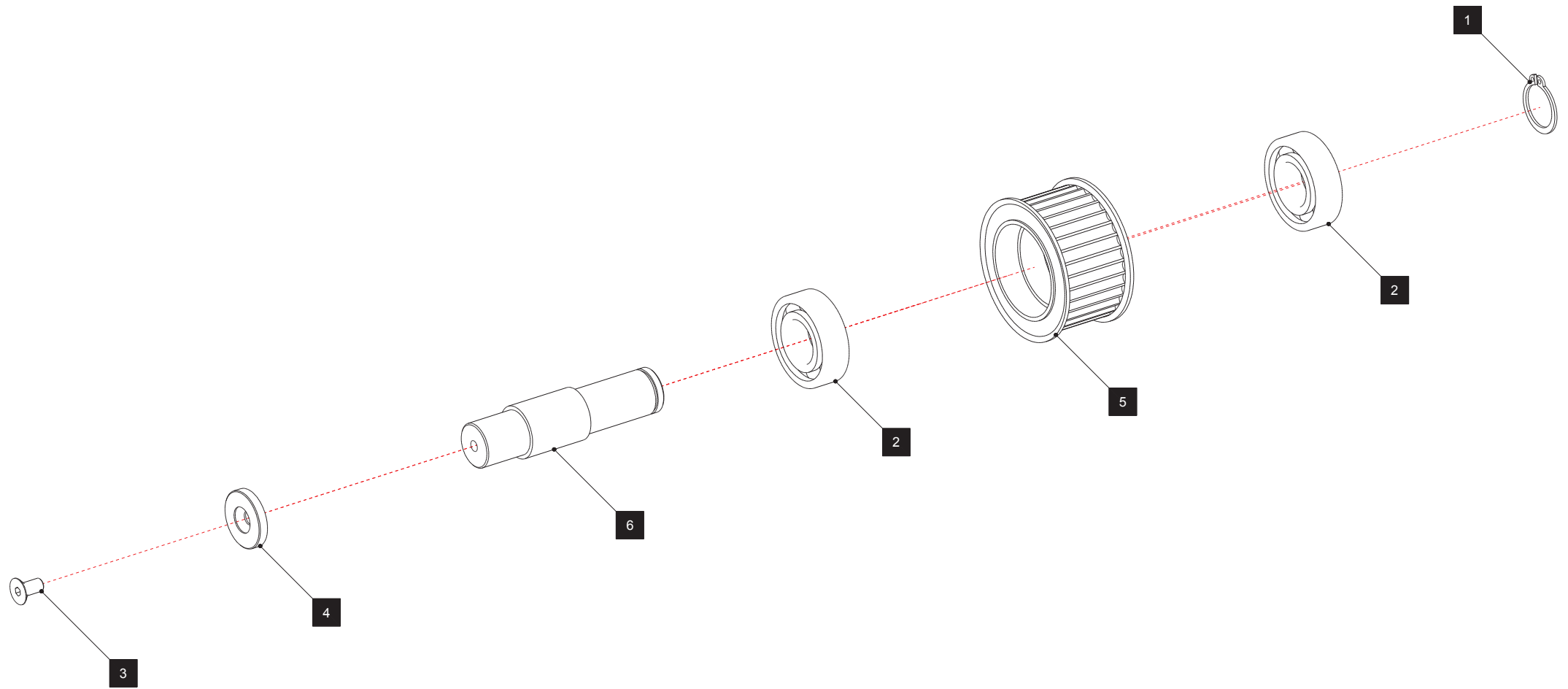
Spanner


Tensor

1.27 - 1


POS.	NAZWA	DESIGNATION	BEZEICHNUNG	PART NUMBER	PAG
1	Napinacz	Tensor	Spanner	140 801 00	
2	Pierścień zabezpieczający DIN471 - 15x1	Retaining ring DIN471 - 15x1	Sicherungsringe DIN 471 - 15x1	DIN 471 - 15x1	
3	Podkładka płaska PN-78/M-82005 - 10,5	Washer PN-78/M-82005 - 10,5	Unterlage PN-78/M-82005 - 10,5	PN-78/M-82005 - 10,5	
4	Łożysko kulkowe PN-85/M-86100 - 6002 - 15x32x9	Ballbearing PN-85/M-86100 - 6002 - 15x32x9	Kugellager PN-85/M-86100 - 6002 - 15x32x9	PN-85/M-86100 - 6002 - 15 x 32 x 9	
5	Nakrętka M10	Nut M10	Mutter M10	PN-86/M-82144 - M10	
6	Koło 5M/25 HTD z32	Pulleys 5M25HTD z32	Zahnriemenräder 5M25HTD z32	TST6091	
7	Oś napinacza	Tensor axel	Spannerachse	TST7453	

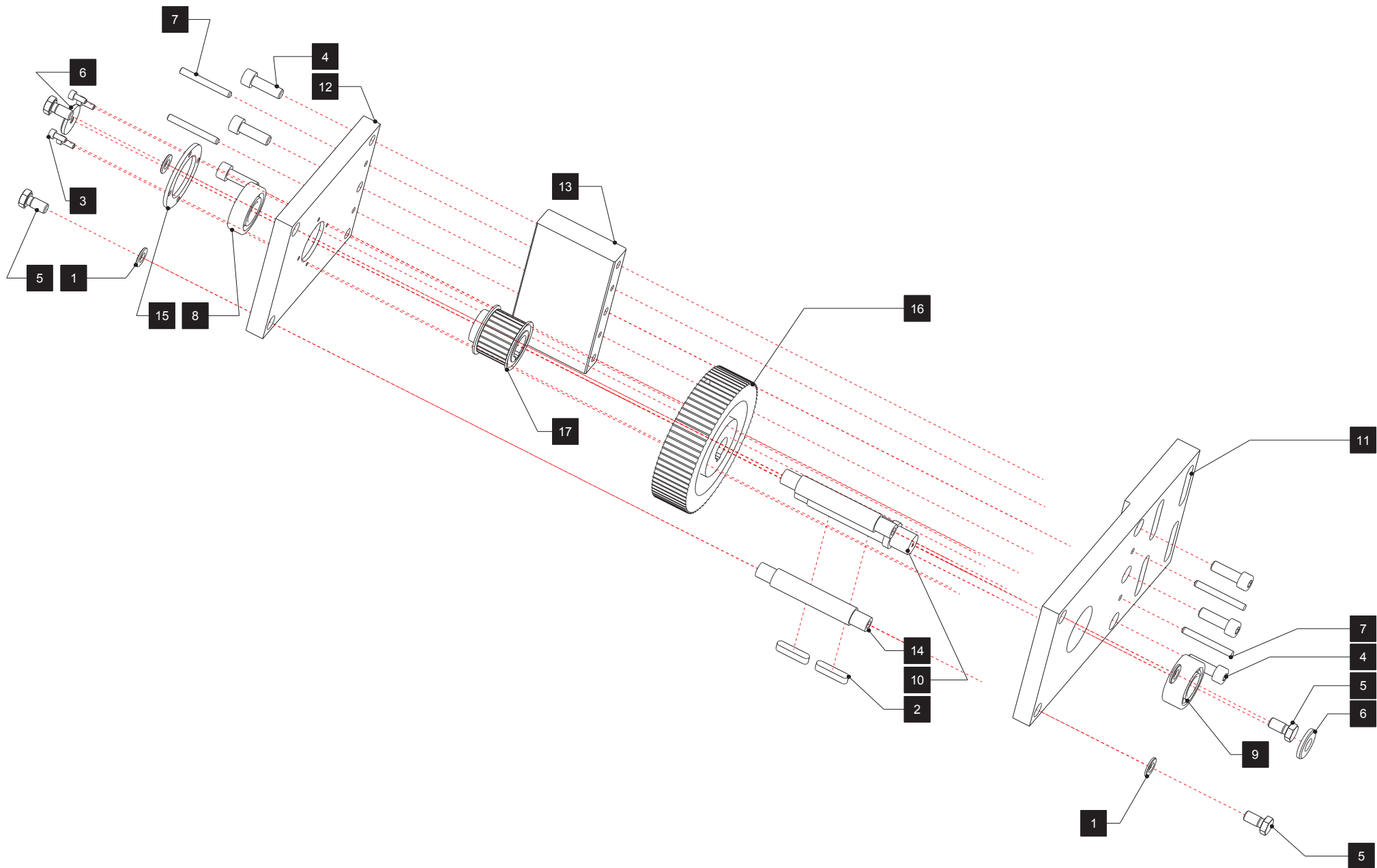
	TST2319	ET SSC	1.27	Napinacz	1.27 - 2
		Version:		Spanner Tensor	



	TST2334	ET SSC	1.28	<b>Zespół koła przewijającego</b>	1.28 - 1
		<b>Version:</b>		Spulenradsatz Assembly of the rewinding wheel	

POS.	NAZWA	DESIGNATION	BEZEICHNUNG	PART NUMBER	PAG
1	Pierścień zabezpieczający DIN 471 - 17x1	Retaining ring DIN 478 - 17x1	Sicherungsring DIN 471 - 17x1	DIN 471 - 17x1	
2	Łożysko kulkowe DIN 625 T1 - 6003 - 17x35x10	Ballbearing DIN 625 T1 - 6003 - 17x35x10	Kugellager DIN 625 T1 - 6003 - 17x35x10	DIN 625 T1 - 6003 - 17 x 35 x 10	
3	Śruba DIN 7991 - M5x10	Screw DIN 7991 - M5x10	Schraube DIN7991 - M5x10	DIN 7991 - M5x10	
4	Podkładka	Washer	Unterlage	GN 184-22	
5	Koło 5M/25 HTD z32	Pulley 5M25HTD z32	Zahnriemenräder 5M25HTD z32	TST6095	
6	Oś	Axle	Achse	TST7486	

	TST2334	ET SSC	1.28	Zespół koła przewijającego	1.28 - 2
		Version:		Spulenradsatz Assembly of the rewinding wheel	



XBL2061

ET SSC

Version:

1.29


Przekładnia pośrednia

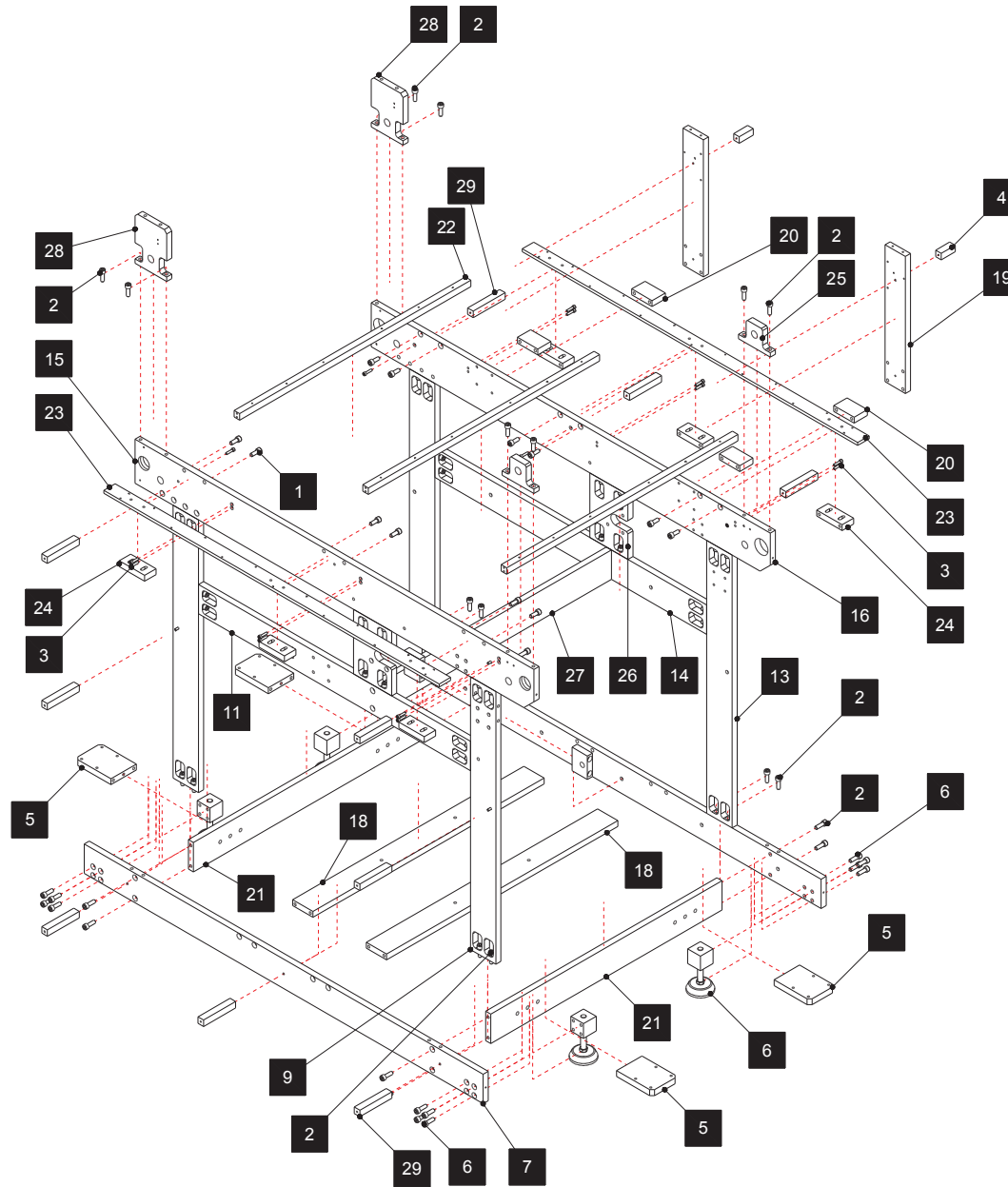
Zwischenübersetzung


Indirect gear

1.29 - 1

POS.	NAZWA	DESIGNATION	BEZEICHNUNG	PART NUMBER	PAG
1	Podkładka DIN 125-1 B 8,4	Washer DIN 125-1 B 8,4	Unterlage DIN-1 B 8,4	DIN 125-1 - B 8,4	
2	Wpust A6x6x28	Joggle A6x6x28	Nut A6x6x28	DIN 6885 - A 6 x 6 x 28	
3	Śruba DIN 912 - M4x10	Screw DIN 912 - M4x10	Schraube DIN 912 - M4x10	DIN 912 - M4 x 10	
4	Śruba DIN 912 - M8x25	Screw DIN 912 - M8x25	Schraube DIN 912 - M8x25	DIN 912 - M8 x 25	
5	Śruba DIN 933 - M8x16	Screw DIN933 - M8x16	Schraube DIN 933 - M8x16	DIN 933 - M8 x 16	
6	Podkładka GN 184-25	Washer GN 184-25	Unterlage GN 184-25	GN 184-25	
7	Kołek walcowy	Cylinder dowel	Bolzen	ISO 8734 - 5 x 45 - A	
8	Łożysko	Ball bearing	Kugellager	6203 - 17 x 40 x 12	
9	Łożysko	Ball bearing	Kugellager	2203 - 17 x 40 x 16	
10	Walek pośredni	Indirectly roll	Zwischenwelle	XBL3426	
11	Płyta	Plate	Platte	XBL3428	
12	Płyta	Plate	Platte	XBL3429	
13	Kostka dystansowa	Distance Cube	Distanzwürfel	XBL3430	
14	Walek dystansowy	Distance Roll	Distanzrolle	XBL3431	
15	Pokrywka	Lid	Deckel	XBL3432	
16	Koło 5M25HTD z72	Pulley 5M25HTD	Zahnriemenräder 5M25HTD	XBL6023	
17	Kółko M5HTD25 Z24	Pulley M5HTD25	Zahnriemenräder M5HTD25	XFL6043	


	XBL2061	ET SSC	<b>1.29</b>	<b>Przekładnia pośrednia</b> Zwischenübersetzung Indirect gear	<b>1.29 - 2</b>
		<b>Version:</b>			

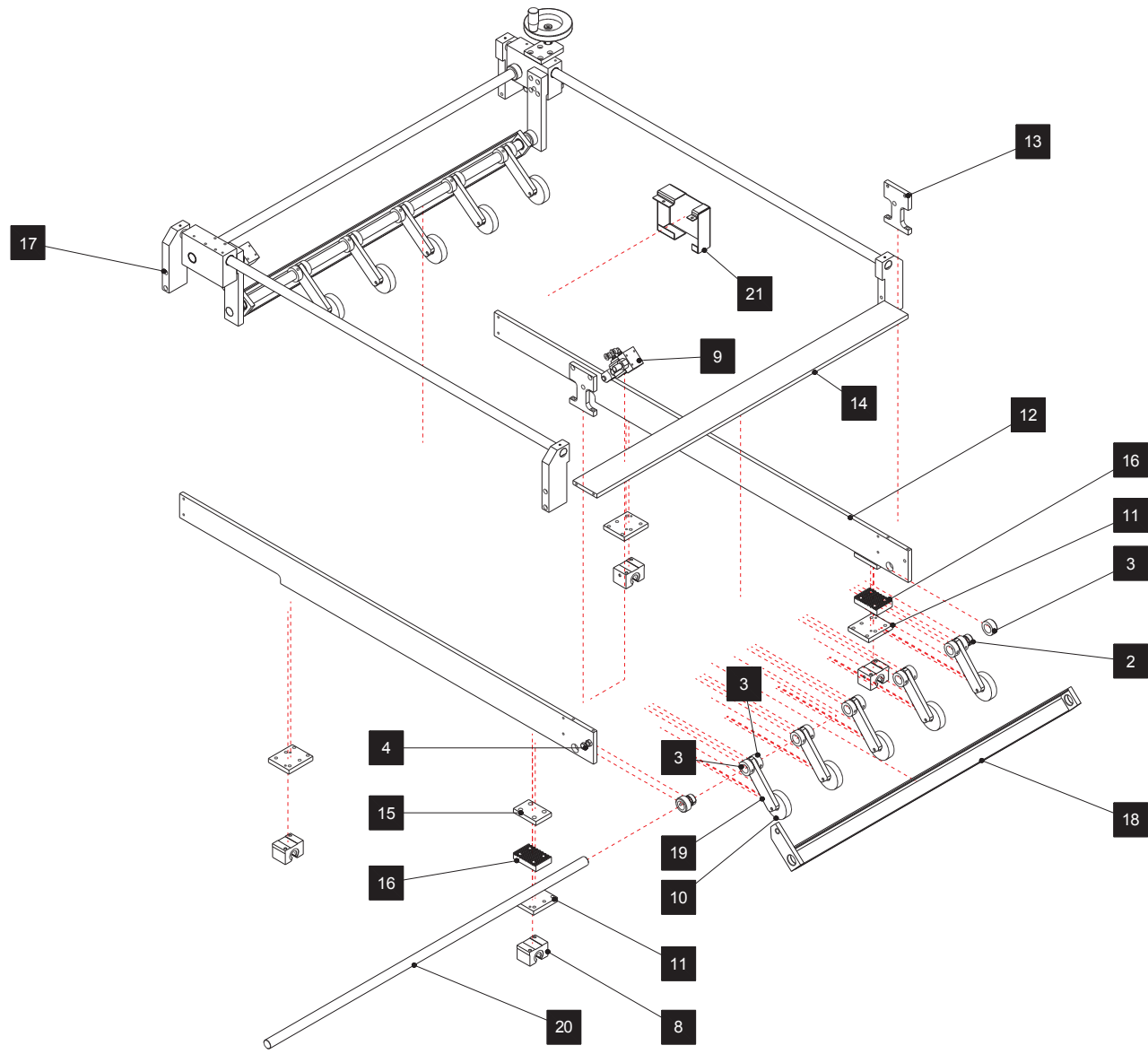



	XPL-2-0001	ET SSC	1.30	Rama SSV	1.30 - 1
	Version:			Gestell SSV	
				Frame SSV	




POS.	NAZWA	DESIGNATION	BEZEICHNUNG	PART NUMBER	PAG
1	Śruba M10x25	Schraube M10x25	Screw M10x25	ISO 4762 - M10 x 25	
2	Śruba M10x30	Schraube M10x30	Screw m10x30	ISO 4762 - M10 x 30	
3	Śruba M6x25	Schraube M6x25	Screw M6x25	ISO 4762 - M6 x 25	
4	Kołek dystansowy	Distance dowel	Distnazbolzen	RST3109-2	
5	Płytką	Plate	Platte	TST-3-0083	
6	Stopka			TST2081	
7	Trawersa	Crossbar	Traverse	XPL-3-0001	
8	Trawersa	Cross-bar	Traverse	XPL-3-0002	
9	Trawersa	Crossbar	Traverse	XPL-3-0003	
10	Trawersa	Crossbar	Traverse	XPL-3-0004	
11	Trawersa	Crossbar	Traverse	XPL-3-0005	
12	Trawersa	Crossbar	Traverse	XPL-3-0006	
13	Trawersa	Crossbar	Traverse	XPL-3-0007	
14	Trawersa	Crossbar	Traverse	XPL-3-0008	
15	Trawersa	Crossbar	Traverse	XPL-3-0009	
16	Trawersa	Crossbar	Traverse	XPL-3-0010	
17	Wspornik	Cantilever	Stütze	XPL-3-0036	
18	Trawersa	Crossbar	Traverse	XPL-3-0092	
19	Wspornik	Cantilever	Stütze	XPL-3-0136	
20	Wspornik	Cantilever	Stütze	XPL-3-0137	
21	Trawersa	Crossbar	Traverse	tst7330	
22	Poprzeczka	Cross-beam	Querstück	tst7333	
23	Płyta	Plate	Platte	tst7352	
24	Kostka	Cube	Würfel	tst7353	
25	Wspornik	Cantilever	Stütze	tst7364	
26	Trawersa			tst7384	
27	Trawersa	Crossbar	Traverse	tst7400	
28	Wspornik	Cantilever	Stütze	tst7435	
29	Kołek dystansowy	Distance dowel	Distanzbolzen	tst7466	

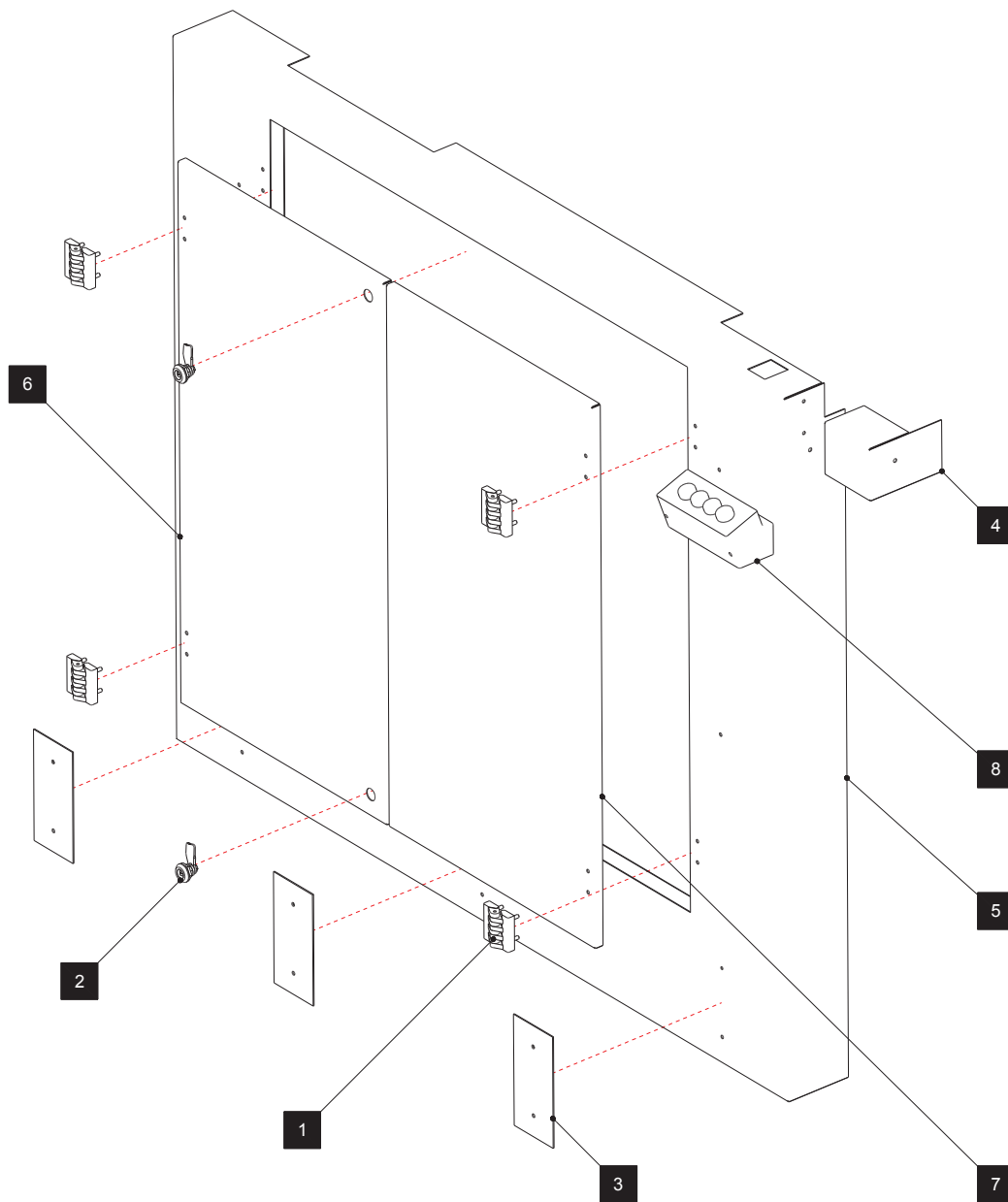
	XPL-2-0001	ET SSC	1.30	Rama SSV	1.30 - 2
		Version:		Gestell SSV Frame SSV	




	XPL-2-0002	ET SSC	1.31	Rama ruchoma	1.31 - 1
		Version:		Beweglichenrahmen	
				Moving frame	


POS.	NAZWA	DESIGNATION	BEZEICHNUNG	PART NUMBER	PAG
1	Tulejka 8x10x10	Sleeve 8x10x10	Buchse 8x10x10	624 008 10	
2	Tulejka 20x23x10	Sleeve 20x23x10	Buchse 20x23x10	624 020 10	
3	Pierścień ustalający	Bestimmungring	Retaining ring	DIN 705 - B20	
4	Śruba	Śruba	Schraube	DIN 933 - M8 x 25	
5	Śruba	Screw	Schraube	DIN 934 - M8	
6	Podkładka	Washer	Unterlage	DIN 988 - S10 x 16	
7	Śruba pasowana	Fitted screw	Verschraubung	ISO 7379 - 8 x 12	
8	Łożysko liniowe KGNO16-C-PP-AS	Linear bearing KGNO16-C-PP-AS	Linearlager KGNO16-C-PP-AS	KGNO16-C-PP-AS	
9	Zespół sił. Pneumat	Pneumatic actuator	Halterung für Pneumatikzylinder	TST-2-0075	
10	Rolka dociskowa	Press roll	Auflegerolle	TST3174	
11	Wspornik	Support	Die Stütze	TST7354	
12	Płyta boczna	Side plate	Wandplatte	TST7356	
13	Wspornik	Support	Stütze	TST7457	
14	Trawersa	Crossbar	Traverse	TST7458	
15	Ramię	arm	Ausleger	XBL3146	
16	Mocowanie	Mount	Montieren	XBL3410	
17	Zespół rolki ruchomej	Moveable roll part	BeweglicherolleSatz	XPL-2-0003	
18	Zespół podnoszenia	Lift part	AnhebenSatz	XPL-2-0055	
19	Listwa	Batten	Leiste	XPL-3-0089	
20	Walek	Roll	Welle	XPL-3-0094	
21	Ośłona	Cover	Haube	XPL-4-0001	

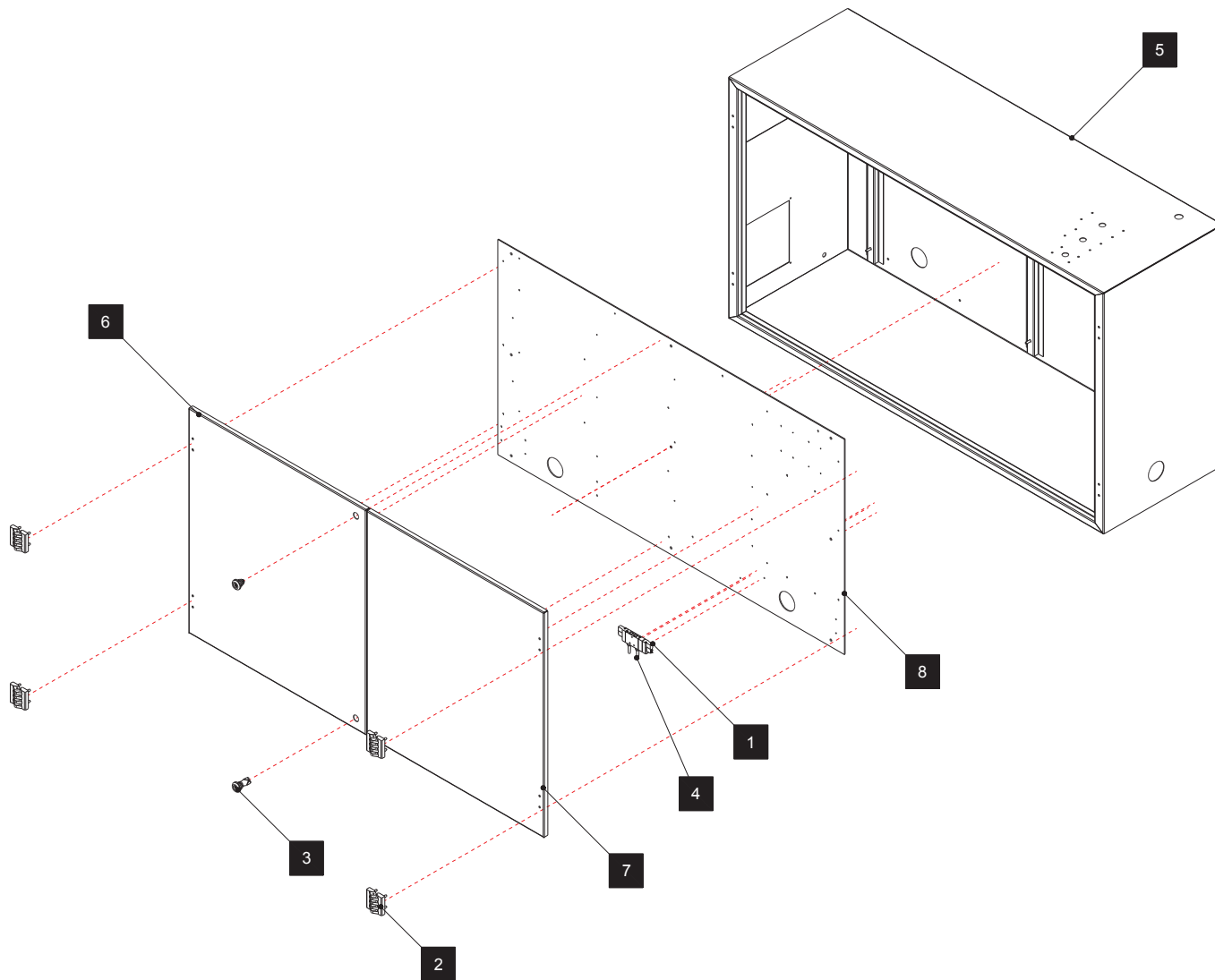
	XPL-2-0002	ET SSC	<b>1.31</b>	<b>Rama ruchoma</b> Beweglichenrahmen	<b>1.31 - 2</b>
		<b>Version:</b>		Moving frame	




	XPL-2-0004	ET SSC	1.32	<b>Oslona</b>	1.32 - 1
	Version:			Die Haube Cover	


POS.	NAZWA	DESIGNATION	BEZEICHNUNG	PART NUMBER	PAG
1	Zawias przykręcany	Tighten hinge	Das AnziehenScharnier	CFA.65 p-M6x18	
2	Zamek kompletny	Complete lock	Komplettschloss	SST-5-0057	
3	Płyta	Plate	Die Platte	TST-3-0131	
4	Oslona	Cover	Die Haube	TST-4-0066	
5	Oslona	Cover	Die Haube	XPL-2-0005	
6	Drzwi szafy kpl	Door of cabinet	Schranktüren	XPL-2-0064	
7	Drzwi szafy kpl.	Door of cabinet	Schranktüren	XPL-2-0065	
8	Panel sterowniczy	Control panel	Systemsteuerung	dwg4	

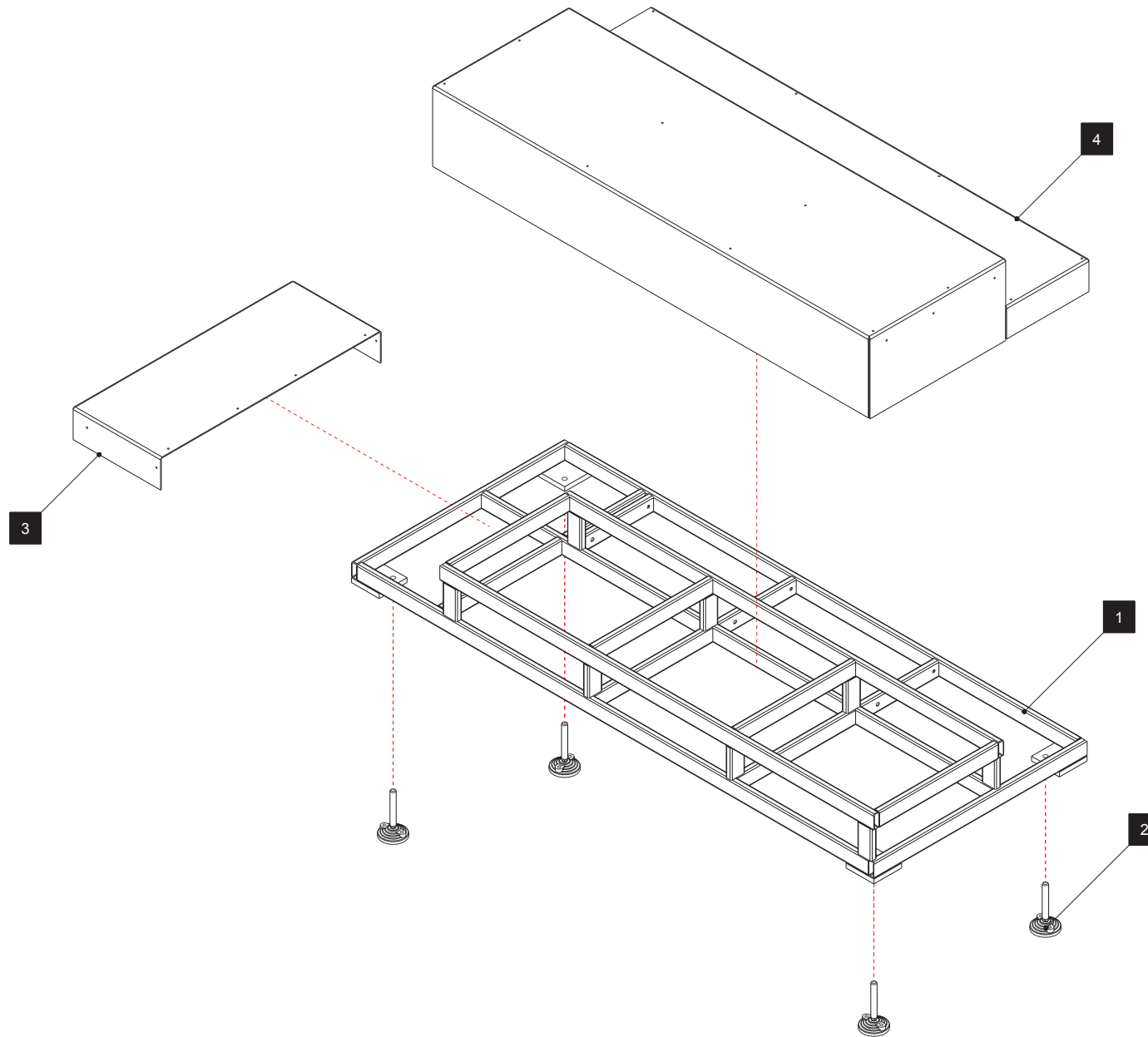
	XPL-2-0004	ET SSC	1.32	Oslona	1.32 - 2
		Version:		Die Haube Cover	



	XPL-2-0006	ET SSC	1.33	<b>Szafa elektryczna</b>	1.33 - 1
	Version:			Electrische schrank	

POS.	NAZWA	DESIGNATION	BEZEICHNUNG	PART NUMBER	PAG
1	Elektrozawór	Electric valve	Electrische ventil	196938_CPE14_M1BH_5_3G1_8	
2	Zawias przykręcany	Tighten hinge	Das AnziehenScharnier	CFA.65 p-M6x18	
3	Zamek kompletny	Complete lock	Komplettschloss	SST-5-0057	
4	Tłumik hałasu	Silenser	Auspufftopf	Tłumik hałasu G1_8	
5	Konstr. spawana szafy el.	Electric cabinet	Elektrische schrank	XPL-2-0007	
6	Drzwi 1 kpl.	Door 1	Die Tür 1	XPL-2-0062	
7	Drzwi 2 kpl.	Door 2	Die Tür 2	XPL-2-0063	
8	Płyta el.	Electric plate	Electrische platte	XPL-4-0005	


	XPL-2-0006	ET SSC	<b>1.33</b>	<b>Szafa elektryczna</b> Electriscche schrank Electric cabinet	<b>1.33 - 2</b>
		<b>Version:</b>			



	XPL-2-0045	ET SSC	<b>1.34</b>	<b>Podest kompletny</b> Komplette Plattform Complete platform	<b>1.34 - 1</b>
		<b>Version:</b>			



POS.	NAZWA	DESIGNATION	BEZEICHNUNG	PART NUMBER	PAG
1	Rama podestu konstrukcja spawana	Platform frame welded construction	Plattform Rahmen Schweißkonstruktion	XPL-2-0046	
2	Stopka wahlowa	Levelling feet	Nivellierfüße	LV.F-80-14-M16x108	
3	Blacha ryflowana	Riffled plate	Rippen Blech	XPL-4-0043	
4	Blacha ryflowana	Riffled plate	Rippen Blech	XPL-4-0042	

	XPL-2-0045	ET SSC	<b>1.34</b>	<b>Podest kompletny</b> Komplette Plattform Complete platform	<b>1.34 - 2</b>
		<b>Version:</b>			

---

**MBO-Gruppe weltweit/ MBO group worldwide/ Le groupe MBO mondial**

---

**MBO Deutschland**

MBO Maschinenbau Oppenweiler Binder GmbH & Co. KG  
Postfach 1169  
71567 Oppenweiler  
DEUTSCHLAND  
Tel.: +49 7191 46-0  
Fax: +49 7191 46-34  
<http://www.mbo-folder.com>  
[info@mbo-folder.com](mailto:info@mbo-folder.com)

**MBO Portugal**

MBO Binder-Maquinas Graficas, S.A.  
Rua Joaquim Alves da Silva 240  
4456-473 Perafita  
PORTUGAL  
Tel.: +351 22 99822-00  
Fax: +351 22 99822-01  
<http://www.mbo-folder.com>  
[info@mbo-folder.com](mailto:info@mbo-folder.com)

**MBO Amerika**

MBO Binder & Co. of America  
400 Highland Drive  
Westampton, NJ 08060  
USA  
Tel.: +1 609 267 2900  
Fax: +1 609 267 1477  
<http://www.mboamerica.com>  
[info@mboamerica.com](mailto:info@mboamerica.com)

**MBO Frankreich**

MBO France SAS  
Z. A. Burospace N° 3  
Route de Gisy B.P. 33  
91571 Bievres Cedex  
FRANCE  
Tel.: +33 1 6935 5090  
Fax: +33 1 6935 5099  
<http://www.mbo-folder.com>  
[info@mbofrance.fr](mailto:info@mbofrance.fr)

**MBO China**

MBO Binder Graphic Systems (Beijing) Co. Ltd.  
No.3 Building, Xing Sheng Industry Park,  
No.7 Tong Ji Zhong Lu, BDA,  
Beijing 100176  
P.R. CHINA  
Tel.: +86 10 6786 2741  
Fax: +86 10 6786 2743  
<http://www.mbo-folder.com.cn>

**Herzog & Heymann**

Herzog & Heymann GmbH & Co. KG  
Postfach 110355  
33663 Bielefeld  
DEUTSCHLAND  
Tel.: +49 5205 7509-0  
Fax: +49 5205 7509-20  
<http://www.herzog-heyman.com>  
[info@herzog-heyman.com](mailto:info@herzog-heyman.com)